



Cherokee Nation Tribal Council Health Committee Report

Claremore Indian Hospital

Month/Year of the report: October 2016

George L Valliere 918-342-6434

Email: george.valliere@ihs.gov

Accomplishments:

- **Staffing:** Active announcements out for Chief of Family Medicine, Chief of Surgery and Hospitalists.
- **Visits:** Outpatient visits for October down 1.4% over the same period the previous year.
- **Revenues:** Revenues for FY2017 increased 26.5% over the same period the previous year.

Future Plans / New Initiatives:

- New Services:
 - Orthopedic patients still being sent to Dr. Wheeler in OKC. Bids for contract in Tulsa area are still being negotiated.
 - Remodel work for Surgery Clinic and Women’s Health awarded.

Workload:

Actual numbers/month

| | | |
|------------------------|-------|--------|
| Outpatient visits down | 1.4% | 24,172 |
| Dental visits down | 20.3% | 720 |
| Admissions up | 9.2% | 71 |
| Newborns up | 33.3% | 45 |
| New charts | | 408 |
| Reactivated Charts | | 375 |

These statistics are compared to FY2016 statistics for the same time period. (October)
 Occupancy rate for October 2016: 18.0%

Third Party Collections:

October collections

| | |
|--------------------|------------------|
| Medicare: | \$ 515,402.67 |
| Medicaid: | 795,922.96 |
| Private Insurance: | 1,664,554.64 |
| V.A. | <u>57,837.96</u> |

\$ 3,033,718.23

Year-to-date collections for FY 2017: \$ 3,033,718.23

Amount billed for October 2016: \$ 3.9 million

Collections are up compared to FY2016 collections for same time period. \$ 340,579.60

Percentage of account receivables pending for claims > 120+ days: 5%

PRC Activities:

October cases

| | | |
|--------------|------------|---------------|
| Funded: | 284 cases: | \$ 956,198.00 |
| Denials: | 277 cases: | \$ 911,058.00 |
| Deferred: | 348 cases: | \$ 229,850.00 |
| CIH clinics: | 19 cases | |

Files to Committee 928

Cherokee Nation Tribal Council Health Committee report

Report By

Connie Davis, MSN, RN

Executive Director Health Services

November 2016

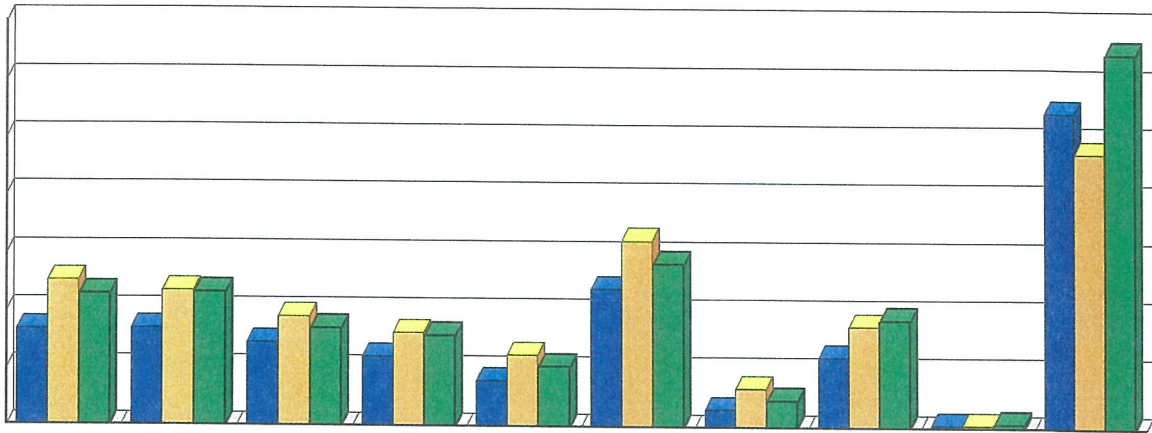
Table of Contents:

| | |
|---|--------------|
| I. Charts and Tables..... | 3-9 |
| • Ambulatory Care Patient Visits by Clinic October 2014-2016 | |
| • Total Ambulatory Patients Visits- October 2014-2016 | |
| • RX by Site, October 2016 | |
| • Dental Services Trends October 2014 - 2016 | |
| • Total 3rd Party Revenue Comparison All Clinics (Oct 2014-Sept 2016) | |
| • 3rd Party Revenue by Clinic (Oct 2014-Sept 2016) | |
| • 3rd Party Revenue Comparison CN WW Hastings Hospital (Oct 2014-Sept 2016) | |
| • Monthly Cash Collection by Fiscal Year | |
| • Staffing Trend- October 2016 | |
| • Affordable Care Act enrolment Report | |
| • Top Diagnosis by Clinic | |
| II. Executive Summary Reports..... | 9-13 |
| • Health Professional Recruitment & Retention | |
| III. Managing Diabetes..... | 14-15 |
| IV. CHS Report as of September 30, 2016..... | 16 |

Charts



AMBULATORY CARE VISITS BY CLINIC, OCTOBER 2014- 2016

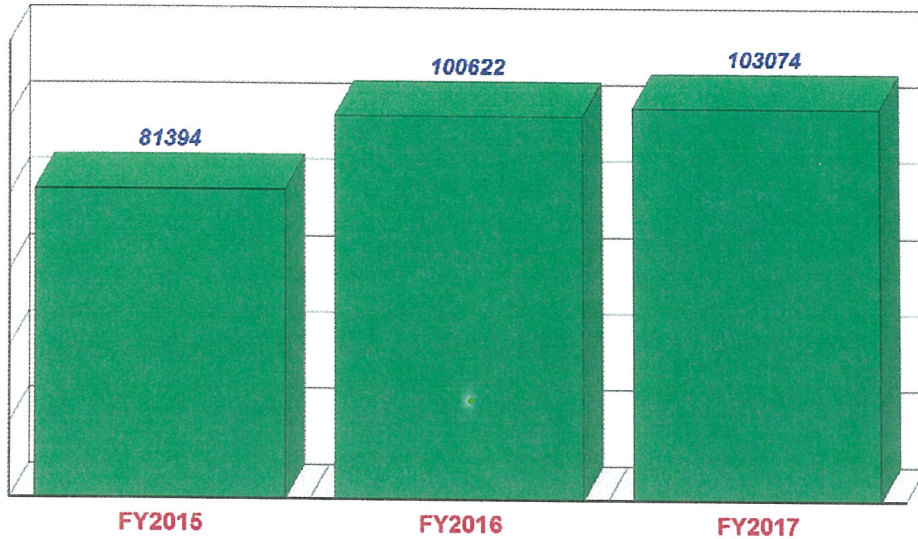


| | WPM | RBS | AMO | JAY | NOW | MUSK | CHC | VINITA | GADUGI | HASTINGS |
|---------------|-------|-------|------|------|------|-------|------|--------|--------|----------|
| FY2015 | 8380 | 8429 | 7229 | 6033 | 4003 | 11985 | 1610 | 6106 | 309 | 27310 |
| FY2016 | 12583 | 11743 | 9537 | 8163 | 6225 | 16108 | 3364 | 8842 | 309 | 23748 |
| FY2017 | 11395 | 11558 | 8442 | 7843 | 5219 | 14180 | 2370 | 9353 | 370 | 32344 |

- This report is based on ambulatory care visits by one or more of the following discipline
- Physician, PA, NP, Dentist, Pharmacist, Optometry, Podiatry and Behavioral Health Clinicians



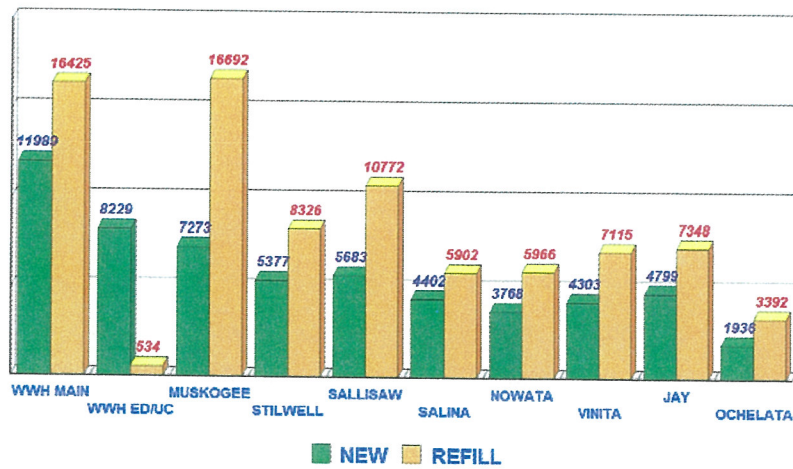
TOTAL AMBULATORY PATIENTS VISITS OCTOBER 2014-2016



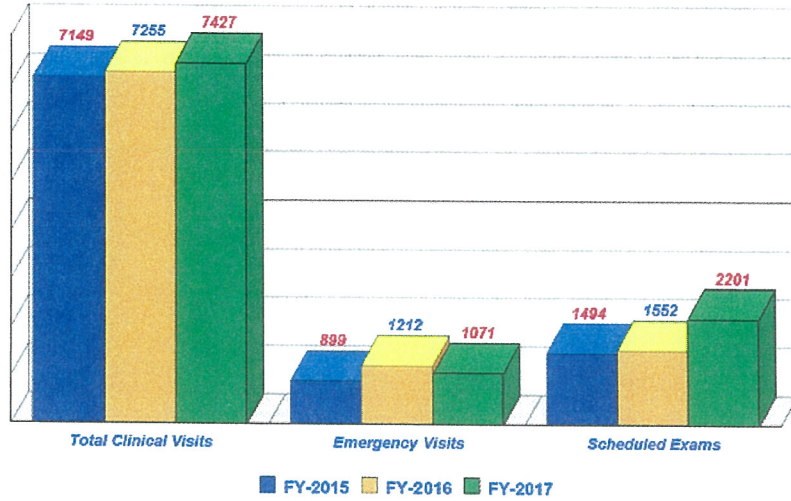
■ This report is based on ambulatory care visits from Clinics and CN-Hastings Hospital



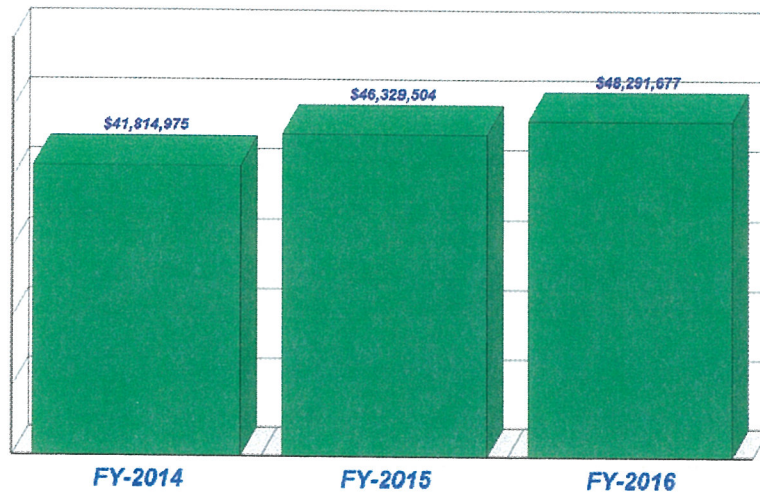
RX BY SITE OCTOBER 2016



Dental Services Trend October 2014- 2016

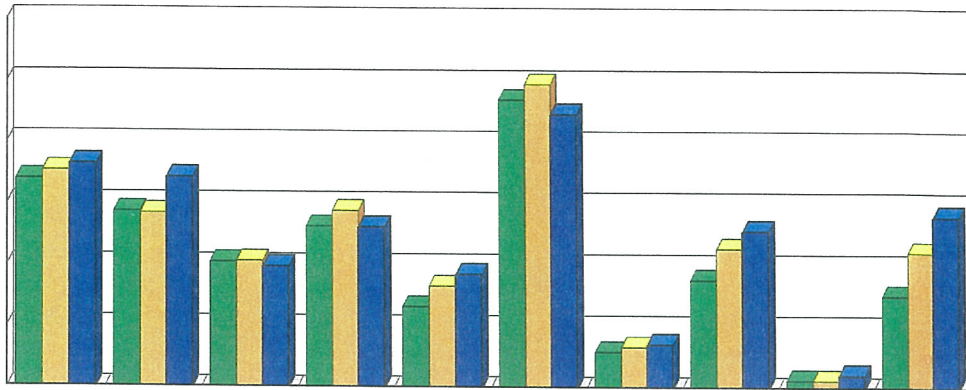


Total Third Party Revenue Comparison (All Clinics only) OCT- SEPTEMBER 2014-2016





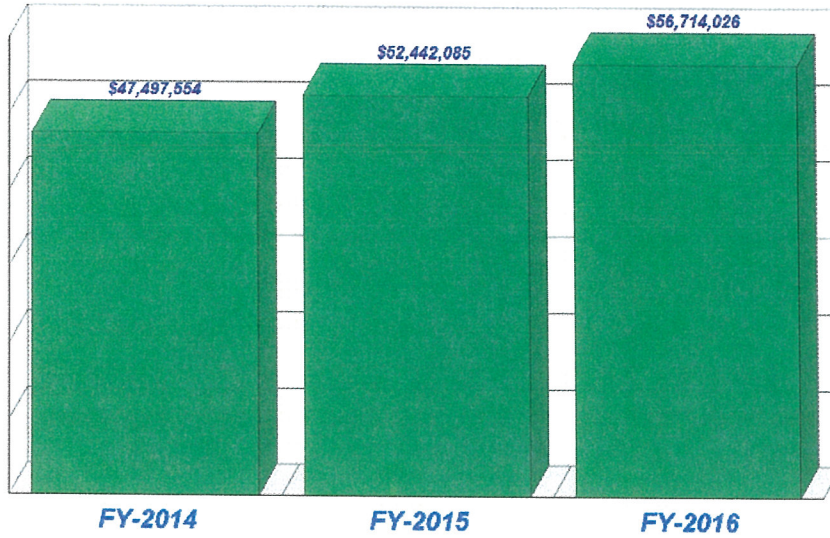
Third Party Revenue by Clinic OCT- September 2016



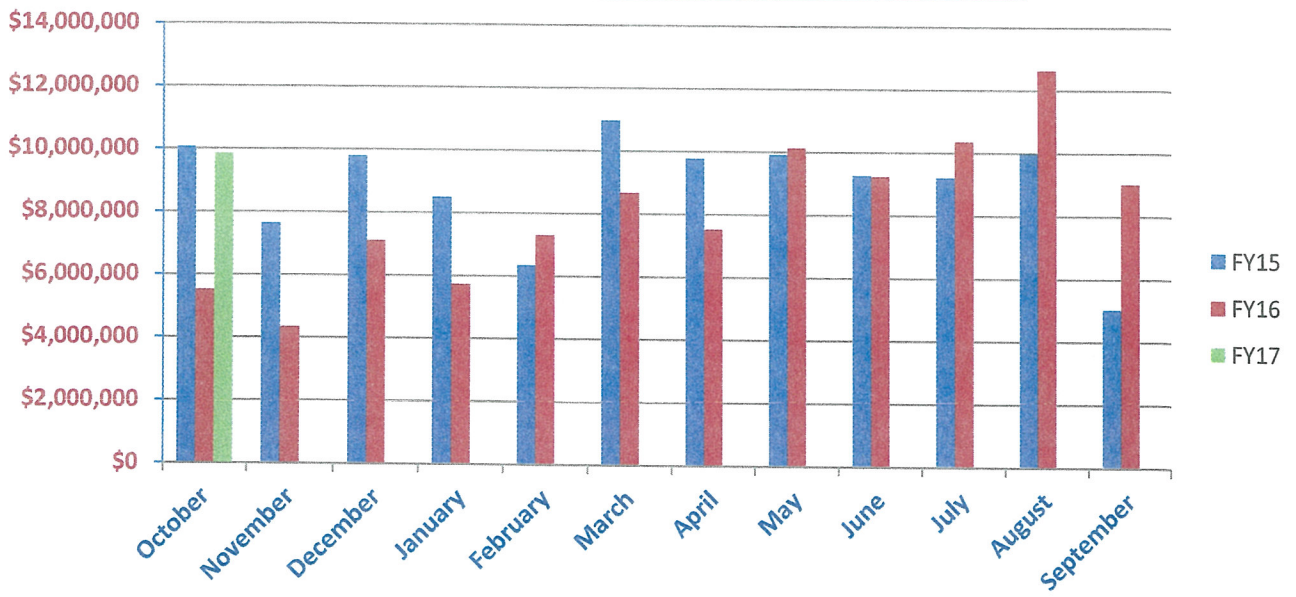
| | Stilwell | Sallisaw | Jay | Salina | Nowata | Muskogee | Ochelata | Vinita | Ga Du Gi | Dental |
|----------------|-------------|-------------|-------------|-------------|-------------|-------------|-------------|-------------|-----------|-------------|
| FY-2014 | \$6,759,679 | \$5,741,802 | \$4,084,770 | \$5,249,878 | \$2,637,753 | \$9,369,180 | \$1,181,639 | \$3,512,595 | \$269,379 | \$3,008,300 |
| FY-2015 | \$7,037,398 | \$5,685,807 | \$4,122,963 | \$5,751,521 | \$3,303,297 | \$9,871,230 | \$1,323,063 | \$4,546,918 | \$245,222 | \$4,442,085 |
| FY-2016 | \$7,241,029 | \$6,814,139 | \$3,926,660 | \$5,219,939 | \$3,670,892 | \$8,887,764 | \$1,412,411 | \$5,108,623 | \$414,892 | \$5,595,328 |



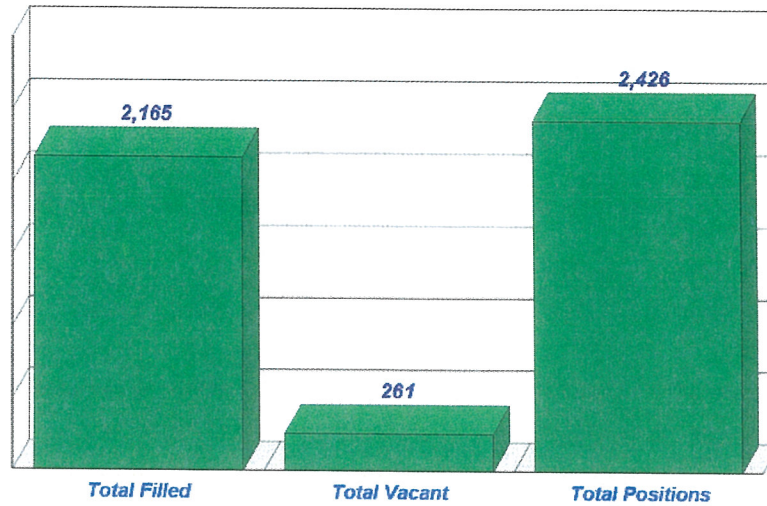
Third Party Revenue Comparison CN WW Hastings Hospital OCT- September 2014-2016



Monthly Cash Collection by Fiscal Year



Staffing Trend Ocotober 2016



| 2016 Affordable Care Act Enrollment Report | | | |
|--|------------|--------------|------------|
| | Educated | Applications | Enrollment |
| CNWWH Hospital | 48 | 8 | 8 |
| WP Mankiller HC | 9 | 0 | 0 |
| Three Rivers HC | 113 | 0 | 0 |
| Vinita HC | 166 | 0 | 0 |
| Redbird Smith HC | 211 | 76 | 15 |
| AMO HC | 2 | 2 | 2 |
| Sam Hider HC | 76 | 0 | 0 |
| Will Rogers HC | 30 | 10 | 6 |
| CN Behavioral Health | 0 | 0 | 0 |
| Cooweescoowee HC | 0 | 6 | 1 |
| Claremore IHS | 0 | 0 | 0 |
| October TOTALS | 655 | 102 | 32 |

Top Diagnosis by Clinic

Sam Hider HC

| | # | Total Visits |
|--|-----|--------------|
| Encounter for immunization | 562 | 3534 |
| Essential (primary) hypertension | 496 | |
| Encounter for administrative examinations, unspecified | 435 | |
| Type 2 diabetes mellitus without complications | 307 | |
| Nicotine dependence, cigarettes, uncomplicated | 161 | |

Ochelata HC

| | # | Total Visits |
|--|-----|--------------|
| Underimmunization status | 382 | 1668 |
| Encounter for immunization | 327 | |
| Essential (primary) hypertension | 206 | |
| Type 2 diabetes mellitus without complications | 147 | |
| Hyperlipidemia, unspecified | 146 | |

Ga Du Gi HC

| | # | Total Visits |
|--|----|--------------|
| Acute maxillary sinusitis | 90 | 334 |
| Acute maxillary sinusitis, unspecified | 90 | |
| Allergic rhinitis due to pollen | 62 | |
| Encounter for immunization | 45 | |
| Encounter for administrative examinations, unspecified | 24 | |

Three Rivers HC

| | # | Total Visits |
|--|------|--------------|
| Encounter for immunization | 1114 | 5947 |
| Encounter for administrative examinations, unspecified | 721 | |
| Essential (primary) hypertension | 494 | |
| Underimmunization status | 339 | |
| Type 2 diabetes mellitus without complications | 307 | |

Will Rogers HC

| | # | Total Visits |
|--|-----|--------------|
| Encounter for immunization | 857 | 2508 |
| Essential (primary) hypertension | 368 | |
| Type 2 diabetes mellitus without complications | 251 | |
| Hyperlipidemia, unspecified | 230 | |
| Encounter for screening, unspecified | 119 | |

A MO HC

| | # | Total Visits |
|--|-----|--------------|
| Encounter for immunization | 831 | 3601 |
| Type 2 diabetes mellitus without complications | 485 | |
| Essential (primary) hypertension | 454 | |
| Encounter for administrative examinations, unspecified | 446 | |
| Encounter for screening, unspecified | 293 | |

Redbird HC

| | # | Total Visits |
|---|-----|--------------|
| Encounter for immunization | 942 | 4243 |
| Encounter for administrative examinations, unspecified | 580 | |
| Essential (primary) hypertension | 474 | |
| Type 2 diabetes mellitus without complications | 470 | |
| Other specified diabetes mellitus without complications | 208 | |

Wilma P Mankiller HC

| | # | Total Visits |
|---|------|--------------|
| Encounter for immunization | 1738 | 4903 |
| Essential (primary) hypertension | 445 | |
| Underimmunization status | 317 | |
| Type 2 diabetes mellitus without complications | 315 | |
| Encounter for general adult medical examination without abnormal findings | 303 | |

Vanita HC

| | # | Total Visits |
|--|-----|--------------|
| Encounter for immunization | 743 | 3534 |
| Type 2 diabetes mellitus without complications | 300 | |
| Essential (primary) hypertension | 253 | |
| Encounter for administrative examinations, unspecified | 188 | |
| Generalized anxiety disorder | 138 | |

WW Hastings HC

| | # | Total Visits |
|--|------|--------------|
| Encounter for immunization | 3505 | 12767 |
| Essential (primary) hypertension | 1233 | |
| Underimmunization status | 1078 | |
| Encounter for administrative examinations, unspecified | 804 | |
| Type 2 diabetes mellitus without complications | 714 | |

Summary Highlights for the month of October, 2016

- **Cooweescoowee Health Center (CHC):** 195 new/re-activated charts; PHNs held an employee influenza vaccines at CHC, Ramona Cherokee Casino, Skiatook Public School faculty, Caney Valley High School, Bartlesville Football, Collinsville Public School faculty and organized a community blood drive. **Three Rivers Health Center (TRHC):** Community Meeting had approximately 400 in attendance; Quarterly Patient Focus Group; Dr. James Baker was recognized with a Pillar Award during the Annual Health Services Award Banquet; Employees of the month were Belinda Garvin and Cindy Martin. **Vinita Health Center (VHC):** 193 new patient charts opened; Health Center staff raised over \$6000 during the month for Breast Cancer Awareness for two different charities – Chicks & Chaps and Craig County Cancer Outreach program; Healthy Native pilot program started in Wellness Center; PHNs provided over 300 flu shots; Hosted a Community Meeting. **Will Rogers Health Center (WRHC):** Blood pressure clinics at the CN Food Distribution Center, Senior Advantage Program, Lenape seniors, Delaware Tribal seniors; 1, 390 flu shots in communities; Dietitians had an educational event for diabetic patients where they offered a variety of healthy soups and provided education about what made the soup healthy. **Wilma P. Mankiller Health Center (WPMHC):** New or reactivated charts – 154; Blood drive; Hosted Cancer Program Health Fair; Hosted over 200 local school children for trick-or-treating; Community Flu Clinics: Indian Capital Vo-Tech, Facet, Rocky Mountain School, Cave Springs School, Peavine School, Maryetta School, Zion School, CNI South and North, Westville School, Chewey Community Building, Proctor Community Building, Dahlongah School, Stilwell Public Schools, Greasy School Carnival, Westville Library, Siloam Springs Casino Staff.
- **CN-WW Hastings Hospital-**

Announcements

On Friday, October 21st, we hosted the current Director of Indian Health Services (IHS), Mary Smith, and her team for a tour of W.W. Hastings and an overview of Cherokee Nation Health Services.

Achievements

Donnie Parish, Health Chief Information Officer, has achieved his Certified Professional in Healthcare Information and Management Systems (CPHIMS) certification after successfully completing the exam at the most recent Healthcare Information and Management Systems Society (HIMSS) conference. This certification sets Mr. Parish apart as he is the only one within Cherokee Nation to hold this certification and one of a few in tribal healthcare systems across the nation.

Patient Access

The Emergency Department and Urgent Care provided care to 6,278 patients during October with a **Left Without Being Seen (LWOBS)** rate of 3.6%.

Surgical Services performed 339 surgical procedures during October 2016.

Patient Transport, transported 167 patients during October 2016

- **Dental Services: Clinical visits** include Exams, Emergency Exams, Return Visits for Treatment, Diabetic Screenings, and Headstart Screenings, **7427**. **Scheduled Dental Examinations** for routine care; **2,201** Clients were served. **Emergency Exams-** These are unscheduled walk in patients **1,071**
- **Emergency Medical Services-** the program transported **410 clients**; of those 2 were emergency transports. In addition **700** participants were trained at our facility.
- **Public Health Nursing-** provided **500** home visits, **55** post-partum checkups. In addition **347** patients were transported.
- **JBC-** Served **23** clients; of those 15 were males and 08 were females. Several staff members participated in development strategies and training opportunities around Oklahoma and in Minneapolis, Minnesota.

- **Dietary Services**—800 clients were provided dietary counseling services. The services include Classes for Diabetes, hypertension, Weight Mgmt., and healthy cooking. Nutrition Education Classes for Elementary School Students; Employee Health Challenge. MNT Classes: 67 number of participants in the classes. Worksite or Community Classes/Presentations: 11.
- **Staffing Report**— Total positions: 2,426; of these 2,165(89.2%) are filled, 261(11%) are vacant.
- **Health facilities** -The program has arranged for Schematic design documents to be sent to IHS as part of JV agreement. Drafted JV equipment purchase process and wrote scope of work for JV consultant FY 17 efforts. Developed Construction assessments for Vinita, Cooweescoowee Health Centers and Cooweescoowee Dental Cabinet installation. Chaired the System wide Safety and Facility meeting. In addition health Facilities staff completed 189 preventative maintenance projects, leaving 20 to be carried over to November, and completed all 109 work orders called in during October. Health Services vehicle fleet consists of 162 vehicles.
- **Community Health Promotion**- The program works directly with Cherokee communities, youths, and schools within the CN Jurisdiction to support healthy lifestyles and sponsors risk prevention. The program offered Smoking Cessation classes at various locations.
- **Community Recreation Center**
 Total Members: 10,189
 Revenue: \$3,710.00
 Total Visits: 7,519
 Total Group Fitness: 3,458
 Total Child Watch: 603
- **Youth Risk Behavior Survey** – We have received input from the CDC and are making preparations to distribute.
- **Public Health Accreditation**- We are now working under new standards (version 1.5) in preparing for re-accreditation. We are working on preparing documentation for Emergency Management, Strategic Plan, Workforce Development, Tribal Health Assessment, Tribal Health Improvement Plan and the Quality Improvement Plan.
- **Sequoyah County PHEs Mary Owl and Lacey Wallace**- Breast Cancer Awareness walk was held for employees and patients with 42 participants. Boys and girls club, central health fair, biggest loser coming in December, and diabetes awareness walk to be held in November. Community gardens and greenhouse yielded 11 lbs. of tomatoes, 7.8 lbs. of jalapenos, 1 lb. Kale, 1 lbs. Okra, 1.2 lbs. peppers, 52.2 lbs. green tomatoes, and beds are being prepared for winter months. Built 2 raised beds at Brushy school and community organization, completed Roland elementary farm to school assessments, Central Public Schools in Sallisaw hosted annual kid's health fair for grades K-6th (226 kids). Delivered PE supplies to Marble City and Gore schools.
- **Cherokee County – PHE Hillary Mead and Sonva Davidson** – PHE partnered with Tahlequah BEST, Cherokee County Healthy Living Program, Cherokee County Health Department, City of Tahlequah, and Cherokee Nation Marshal Service on October 5th, for National Walk to School Day, 246 students walked or rode their bike , held food relay games at Cherokee Elementary, attended the Breast Cancer Awareness Walk on Sept 25, 2016 with 75 walkers, continued to partner with Cherokee County Health Department on Step 2 It program with an average of 15 people who attend, completed the freedom from smoking program with 3 participants completing the course, working with Hastings WIC to assist specialists with gift card disbursement and collections of surveys.
- **Adair County – PHEs Charlie Stilwell and Teresa Eagle** - PHE's met with Tony Ballou to help him with Wickliffe's School's ordering process of Physical Activity equipment with the 2016 Principal Chief Leadership grant, met with various individuals to assess the School Health Indexes for Stilwell Elementary, Rocky Mountain, and Cave Springs for the 2016 Leadership grant, met with Cherokee Children's Mission to plan dates to start planting in the raised beds and greenhouse.

- **Delaware/Ottawa Counties –PHEs Trisha Nichols and Cindy Tuder-**PHEs held farmers market at Afton school with 131 students give \$10 veggie bucks to spend, Sam Hider applied for Certified Healthy Business status, Jay decathlon had 250 participants, Diabetes Prevention Program scheduled to begin in January, planning 2 Diabetes Walks in November in Kenwood and Salina.
- **Mayes and Rogers Counties– PHEs Tony Ballou and Ronnie Neal -** PHE’s Counseled 4 patients at the AMO Health Center in Salina, partnered with Mayes county HOPE coalition to provide the “Maco Fit Business” community symposium, started partnership with Chouteau-Mazie High School in providing tobacco cessation counseling, started tobacco policy review with Osage Schools, taught Smoking Cessation Class at Pryor Church, completed MACO (Mayes County Fitness Running/Walking Group) fit with 48 participants and ROCO (Rogers County Fitness/Running Group) Fit with 121 participants, started AMO Wings with an average of 22 participants weekly, installed raised bed garden at Osage public school and Thunderbird Youth Academy in Pryor, completed MAPP process for Mayes County, helped with 5k in Nowata.
- **Muskogee County – PHE Jason Shelor and Stephanie Buckskin-** PHE’s worked with Braggs on a mobile farmers market and community garden project, starting a community garden at Warner Schools, starting Smokeless Tobacco Survey in November, offering tobacco cessation classes at 3 Rivers, assisting several schools with the School Health Index as part of the School Health Leadership Grant, working with Muskogee Housing Authority to promote Smoke Free Housing, passed a tobacco/vapor ordinance in Webbers Falls, Diabetes Prevention Program to begin in January, planning for the Garden of Lights run in December, submitted a story featuring the Muskogee Farmers Market and Dal-Tile success to CDC.
- **Washington/Craig/Nowata Counties – PHE Amy DeVore –** PHE’s held Nowata Halloween Boo-Yah run, held SWAT meeting at Weing Halsell Middle School, provided pedometers to Oklahoma Union School and Nowata Boys and Girls club for walking groups, met with Welch, Vinita, and Bluejacket schools regarding community health partnership efforts.
- **Contract Health Services–** During the month of October 2016, CHS program processed **8,200**; of those **7,988(97.4%)** were **approved** at the cost of \$ **3,476,301**.
- **Behavioral Health Services—** A range of behavioral health Services were provided across 2270 visits to Behavioral Health. The services provided ranged from psychiatric services to rigorous psychological assessments to parent-child interaction therapy and included individual, group, and marriage and family therapy.

Health Professional Recruitment, Retention, and Credentialing Report:

Completed candidates approved to start (processed and at contract stage)

- Jeffery Coldwell, MD (WWH-UC, PRN)-11/28/16
- DJ Foster, DDS (Vinita)-11/28/16
- Lauren Langland, Dental Hygienist (Vinita)- 12/5/16
- Delicia Susie Robertson, APRN (WWH-UC)- 1/9/17
- Matthew Williams, Pharmacist (RSHC)-1/9/17
- Melissa Gastorf, DO (Vinita)-1/9/17
- Jeffery Gastorf, DO (Vinita)-1/9/17
- Diana Drvostep, Pediatric DDS (TRHC)-Jan 2017

Recruiting for the following Vacancies (does not include vacancies where a candidate has been selected and is process)

Clinic Vacancies:

- Physicians: 12 (This includes three physicians for medical directors at Ochelata, Stilwell, and Nowata.)
- PA: 1

- APRN: 3 & 1PRN

WWH Vacancies:

- Physicians: 2 PRN for Pediatric Inpatient
- CNMidwife: 1
- APRN: 2 PRN for UC, & 1 Primary Care

Dental, Pharmacy, BH, and PT- No Vacancies

Sourcing Update

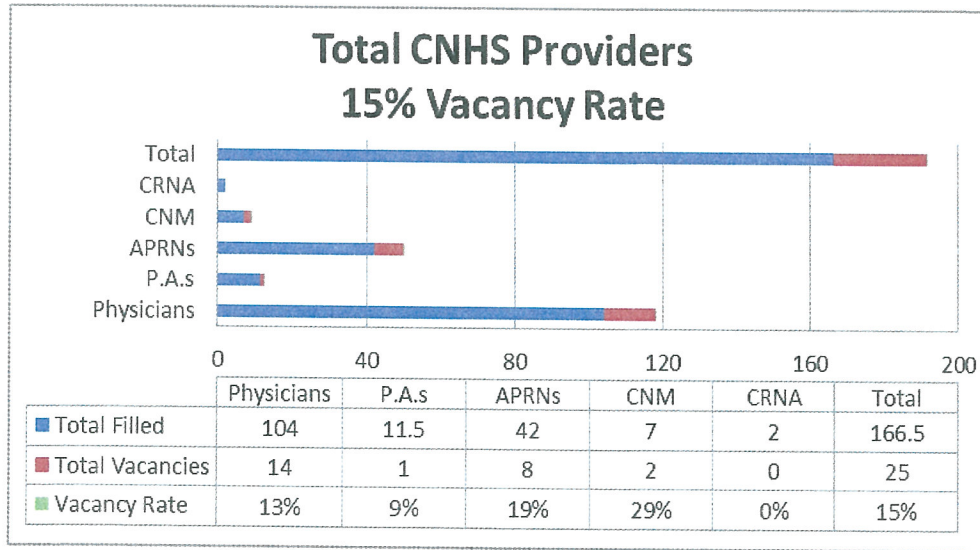
Lauren Redden is handling the marketing for our source boards. Our postings on Practice Link can be easily shared by anyone by going to the job and selecting the share to a friend link. Go to www.practicelink.com !

Our vacancies are also posted on Three Rural Net; www.3Rnet.org We are a member with states across the country; matching healthcare professionals with rural and underserved jobs. In addition we post on the National Health Service Corp (NHSC) website because our facilities are NHSC loan repayment sites.

In addition to sourcing we continue to recruit with our residents and from residency programs. We have three Cherokee candidates available July 2017. We also have recruitment efforts using physician data bases and an internal referral program.

Recent Selections (packet issued, pending receipt and/or processing)

- APRN-Vinita
- Physician- WWH-PRN-Urgent Care
- Physician- WWH-Primary Care
- Physician- WWH-Surgical Inpatient
- Physical Therapist- Jay



Managing Diabetes – It’s Not Easy, But It’s Worth It

November is a Diabetes Month—More than 29 million people in the United States have diabetes, but 1 out of 4 of them doesn’t know they have it. There are three main types of diabetes: Type 1, Type 2, and gestational diabetes (diabetes while pregnant, which can put the pregnancy and baby at risk and lead to type 2 diabetes later). With Type 1 diabetes, your body can't make insulin (a hormone that regulates blood sugar), so you need to take it every day. Type 1 diabetes is less common than Type 2 diabetes; about 5% of the people who have diabetes have Type 1. Currently, no one knows how to prevent Type 1 diabetes.

Most people with diabetes—9 out of 10—have Type 2 diabetes. With Type 2 diabetes, your body doesn't use insulin well and is unable to keep blood sugar at normal levels. If you have any of the risk factors below, ask your doctor if you should be tested for diabetes. The sooner you find out, the sooner you can start making healthy changes that will benefit you now and in the future.

Diabetes by the Numbers

- **29.1 million** US adults have diabetes—and **1 out of 4** of them doesn’t know they have it.
- At least **1 out of 3** people will develop diabetes in their lifetime.
- Medical costs for people with diabetes are **twice as high** as for people without diabetes.
- Risk of death for adults with diabetes is **50% higher** than for adults without diabetes.

Type 2 diabetes risk factors include

- Being overweight.
- Being 45 years or older.
- Having a parent, brother, or sister with type 2 diabetes.
- Being physically active less than 3 times a week.
- Ever having gestational diabetes or giving birth to a baby who weighed more than 9 pounds.

Race and ethnicity also matter: American Indians, African Americans, Hispanic/Latino Americans, Pacific Islanders, and some Asian Americans are at higher risk for Type 2 diabetes.

You've Been Diagnosed with Diabetes. Now What?

It's a balancing act—food, activity, medicine, and blood sugar levels—but you can do it. Manage your diabetes throughout the day by. Keep it fresh by shopping the outside aisles of the grocery store for fruits, veggies, lean meat, and dairy.

- **Following a healthy eating plan**, including eating more fruits and vegetables and less sugar and salt.
- **Getting physically active** —10 to 20 minutes a day is better than only an hour once a week.
- **Taking diabetes medicine** as prescribed by your doctor.

- **Testing your blood sugar** regularly to understand and track how food, activity, and medicine affect your blood sugar levels.

Know Your ABCs

Work with your doctor to manage your diabetes ABCs, and keep a record of your numbers. Results will help determine if your treatment plan is working and you're able to stay in your target range—for example, an A1C of 7% or less—or if adjustments need to be made. Staying on track will help lower your risk of additional health problems.

- **A**—the A1C test, which measures average blood sugar over 2 to 3 months.
- **B**—blood pressure, the force of blood flow inside blood vessels.
- **C**—cholesterol, a group of blood fats that affect the risk of heart attack or stroke.
- **S**—stops smoking or don't start.

Prevent Complications

People with Type 1 or Type 2 diabetes are at higher risk for serious health complications, but controlling your blood sugar levels can help you avoid or delay these serious health complications, and treating complications as soon as possible can help prevent them from getting worse. The Diabetes complications may include:

- **Heart disease and stroke:** People with diabetes are twice as likely to have heart disease or a stroke as people without diabetes, and at an earlier age.
- **Blindness and eye problems:** Diabetic retinopathy (damage to blood vessels in the retina), cataract (clouding of the lens), and glaucoma (increase in fluid pressure in the eye) can all result in vision loss.
- **Kidney disease:** High blood sugar levels can damage the kidneys over time, long before you start to feel bad.
- **Amputations:** This means you could lose a foot or leg. Diabetes causes damage to blood vessels and nerves, particularly in the feet, and can lead to serious, hard-to-treat infections. Amputation may be necessary to keep the infection from spreading.

Put Care on Your Calendar

Every day: stay active, eat a healthy diet, and take medication if prescribed; check feet for redness, swelling, pain, or sores.

Each health care visit (at least 4 times a year): blood pressure check; foot check.

Twice a year: A1C test; dental checkup.

Once a year: cholesterol test; kidney function test; podiatrist (foot doctor) and eye doctor visits; flu shot (and other vaccines as recommended by your doctor).

CHS Report as of October 31, 2016

| CAN Description | HASTINGS | | | STILWELL | | | SALLISAW | | | JAY | |
|---------------------------|------------|--------------|--------------|-----------|------------|------------|-----------|------------|------------|------------|------------|
| | Paid | Open | Total | Paid | Open | Total | Paid | Open | Total | Open | Total |
| J50RW01 HASTINGS 01 | 12,664.85 | 75,169.00 | 87,833.85 | | | 0.00 | | | 0.00 | | 0.00 |
| J50RW02 MERP | 7,624.64 | 33,223.89 | 40,848.53 | 707.13 | 4,784.78 | 5,491.91 | 3,711.08 | 28,378.50 | 32,089.58 | 332.00 | 656.62 |
| J50RW03 INPATIENT | 149,648.04 | 539,817.72 | 689,465.76 | 3,640.15 | 90,085.00 | 93,725.15 | 4,042.10 | 44,144.00 | 48,186.10 | 6,550.00 | 61,736.89 |
| J50RW04 OUTPATIENT | 96,156.81 | 699,006.91 | 795,163.72 | 8,629.47 | 497,133.00 | 505,762.47 | 17,262.82 | 151,047.00 | 168,310.00 | 133,629.00 | 137,774.00 |
| J50RW05 SUBSTANCE ABUSE | 760.00 | 52,229.00 | 52,989.00 | | | 0.00 | | 5,850.00 | 5,850.00 | | 0.00 |
| J50RW06 BEHAVIORAL HEALTH | 14,000.00 | 51,325.00 | 65,325.00 | | | 0.00 | | | | | 0.00 |
| J50RW08 DENTAL | 3,203.46 | 7,950.00 | 11,153.46 | 20.00 | | 20.00 | | | | 70.00 | 70.00 |
| J50RW19 DIABETIC SHOES | | | 0.00 | | | 0.00 | | | | | 0.00 |
| J50RW47 5% INPATIENT | 92.05 | 46,414.00 | 46,506.05 | 12,050.00 | 675.00 | 12,725.00 | | | | | 0.00 |
| J50RW48 5% OUTPATIENT | 9,231.24 | 6,725.00 | 15,956.24 | 151.00 | | 151.00 | | | | | 0.00 |
| J50RW49 5% DENTAL | 10,400.00 | 10,400.00 | 20,800.00 | 28,740.00 | | 28,740.00 | 9,640.00 | 42,400.00 | 52,040.00 | 16,120.00 | 17,516.00 |
| J50RW50 5% VISION | 41,316.79 | 41,316.79 | 82,633.58 | 13,012.00 | | 13,012.00 | 19,767.00 | | 19,767.00 | | 0.00 |
| TOTALS | 292,381.09 | 1,663,677.31 | 1,956,058.40 | 25,056.63 | 634,580.78 | 659,637.41 | 34,756.00 | 291,661.50 | 326,417.50 | 166,631.00 | 217,794.51 |

| CAN Description | SALINA | | | NOWATA | | | MUSKOGEE | | | VINITA | |
|---------------------------|-----------|------------|------------|-----------|------------|------------|-----------|------------|------------|------------|------------|
| | Paid | Open | Total | Paid | Open | Total | Paid | Open | Total | Open | Total |
| J50RW01 HASTINGS 01 | | | 0.00 | | | 0.00 | | | 0.00 | | 0.00 |
| J50RW02 MERP | 5,480.50 | 2,395.00 | 7,875.50 | 3,052.36 | 3,052.36 | 6,104.72 | 876.96 | 917.00 | 1,793.96 | 6,594.16 | 9,532.16 |
| J50RW03 INPATIENT | 21.69 | 1.00 | 22.69 | | | 0.00 | 891.37 | 2,765.00 | 3,656.37 | | 0.00 |
| J50RW04 OUTPATIENT | 21,387.96 | 263,209.00 | 284,596.96 | 9,432.23 | 85,173.00 | 94,605.23 | 18,440.18 | 190,602.00 | 209,042.18 | 157,602.00 | 166,496.44 |
| J50RW05 SUBSTANCE ABUSE | 5,650.00 | 5,650.00 | 11,300.00 | 5,005.00 | 6,079.25 | 11,084.25 | | 3,100.00 | 3,100.00 | 5,050.00 | 6,960.00 |
| J50RW06 BEHAVIORAL HEALTH | 8,660.00 | 8,660.00 | 17,320.00 | | | 0.00 | | | 0.00 | | 0.00 |
| J50RW09 DENTAL | 20.00 | 20.00 | 40.00 | 20.00 | | 20.00 | 590.00 | 3,430.00 | 4,020.00 | 27.00 | 4,340.00 |
| J50RW19 DIABETIC SHOES | | | 0.00 | | | 0.00 | | | 0.00 | | 0.00 |
| J50RW47 5% INPATIENT | 3,050.00 | 3,050.00 | 6,100.00 | 435.60 | 14,289.00 | 14,724.60 | | | 0.00 | 9,103.50 | 14,607.50 |
| J50RW48 5% OUTPATIENT | | | 0.00 | | | 0.00 | | 25.00 | 25.00 | 113.29 | 3,783.29 |
| J50RW49 5% DENTAL | 130.00 | 2,850.00 | 2,980.00 | | | 0.00 | 2,607.85 | 16,000.00 | 18,607.85 | 293.00 | 11,943.00 |
| J50RW50 5% VISION | 7,634.00 | 7,634.00 | 15,268.00 | 15,097.00 | | 15,097.00 | | 12,669.00 | 12,669.00 | 26,722.00 | 26,722.00 |
| TOTALS | 27,040.15 | 293,669.00 | 320,709.15 | 17,945.39 | 120,638.25 | 138,583.64 | 23,406.35 | 229,726.00 | 263,136.36 | 24,024.39 | 246,602.00 |

| CAN Description | CLAREMORE | | | OCHELATA | | | TOTAL | | |
|---------------------------|-----------|------------|------------|----------|-----------|-----------|------------|--------------|--------------|
| | Paid | Open | Total | Paid | Open | Total | Paid | Open | Total |
| J50RW01 HASTINGS 01 | | | 0.00 | | | 0.00 | 12,664.85 | 75,169.00 | 87,833.85 |
| J50RW02 MERP | 1,321.16 | | 1,321.16 | 46.00 | 46.00 | 92.00 | 29,696.61 | 73,005.17 | 102,701.78 |
| J50RW03 INPATIENT | | | 0.00 | | | 0.00 | 210,460.24 | 665,482.72 | 875,942.96 |
| J50RW04 OUTPATIENT | 20,742.27 | 276,731.00 | 297,473.27 | 2,690.61 | 65,795.00 | 68,485.61 | 206,679.79 | 2,519,027.91 | 2,725,707.70 |
| J50RW05 SUBSTANCE ABUSE | 6,700.00 | 6,700.00 | 13,400.00 | | | 0.00 | 5,765.00 | 50,273.25 | 56,038.25 |
| J50RW06 BEHAVIORAL HEALTH | | | 0.00 | 2,575.00 | | 2,575.00 | 17,575.00 | 64,545.00 | 82,120.00 |
| J50RW08 DENTAL | | | 0.00 | | | 0.00 | -3,950.46 | 11,530.00 | 7,579.54 |
| J50RW19 DIABETIC SHOES | | | 0.00 | | | 0.00 | | | 0.00 |
| J50RW47 5% INPATIENT | 3,007.89 | 11,500.00 | 14,507.89 | 617.02 | 617.02 | 1,234.04 | 25,317.14 | 81,328.00 | 106,645.14 |
| J50RW48 5% OUTPATIENT | | | 0.00 | | | 0.00 | 9,344.53 | 11,126.00 | 20,470.53 |
| J50RW49 5% DENTAL | | | 0.00 | | | 0.00 | 14,065.85 | 140,010.00 | 154,075.85 |
| J50RW50 5% VISION | | | 0.00 | | | 0.00 | | 142,037.79 | 142,037.79 |
| TOTALS | 25,071.32 | 296,631.00 | 321,702.32 | 6,882.63 | 89,638.00 | 96,520.63 | 535,719.47 | 3,054,434.84 | 4,430,154.31 |

| Description | TOTAL | | | Projected Annual Expense | Projected Bal At Year End |
|----------------|---------------|------------|--------------|--------------------------|---------------------------|
| | Budget | Open | Balance | | |
| COMPACT | 28,219,616.00 | 451,530.34 | 3,356,654.63 | 24,411,431.03 | 45,698,219.64 |
| SUB ABUSE | 260,000.00 | 5,765.00 | 90,273.25 | 163,961.75 | (62,459.00) |
| DIABETIC SHOES | 350,000.00 | 0.00 | 350,000.00 | 0.00 | 350,000.00 |
| 5% DIVIDEND | 6,500,000.00 | 78,424.13 | 447,506.96 | 5,974,066.91 | 6,311,173.08 |
| Totals | 35,329,616.00 | 535,719.47 | 3,694,434.64 | 30,999,461.69 | 53,161,651.72 |