



Cherokee Nation Tribal Council Health Committee Report

Claremore Indian Hospital

Month/Year of the report: February 2016

George L Valliere 918-342-6200

Email: george.valliere@ihs.gov

Accomplishments:

- **Staffing:** Active announcement out for Chief of Family Medicine, Dental Chief, Surgery Chief.
- **Visits:** Outpatient visits for February up 25.8% over the same period the previous year.
- **Revenues:** Revenues for FY2016 increased 24.08% over the same period the previous year.

Future Plans / New Initiatives:

- New Services:
 - Orthopedic patients still being sent to Dr. in OKC. Still working on Request for Bid for same service in Tulsa/Claremore area.

Workload:

Actual numbers/month

Outpatient visits up	25.8%	23,074
Dental visits up	15.3%	852
Admissions up	45.8%	86
Newborns down	13.0%	20
New charts		373
Reactivated Charts		317

These statistics are compared to FY2015 statistics for the same time period. (February)
Occupancy rate for February 2016: 18%

Third Party Collections:

February collections

Medicare:	\$ 265,358.50
Medicaid:	401,684.69
Private Insurance:	815,728.57
V.A.	<u>78,899.91</u>

\$ 1,561,671.67

Year-to-date collections for FY 2016: \$ 9,099,894.08

Amount billed for February 2016: \$ 3.6 million

Collections are up compared to FY2015 collections for same time period. \$ 1,766,206.85

Percentage of account receivables pending for claims > 120+ days: 4%

PRC Activities:

February cases

Funded:	252 cases:	\$ 832,968.84
Denials:	220 cases:	\$ 815,681.00
Deferred:	418 cases:	\$ 761,042.00
CIH clinics:	24 cases	

Files to Committee 914

Cherokee Nation Tribal Council Health Committee report

Report By

Connie Davis, MSN, RN

Executive Director Health Services

March, 2016

Table of Contents:

I. Executive Summary Report.....	2
II. Charts and Tables.....	4
a. Ambulatory Care Patient Visits by clinic	4
b. Total Ambulatory Patients Visits-February 2016 & 3rd Party Revenue Hastings -Oct-Jan FY 14-16.....	5
c. Total 3rd Party Collections, Clinics only.....	6
d. 3rd Party Revenue, Grand Total (All Sites) & Staffing Summary- February 2016	7
e. RX by Site, February 2016 & Dental Services February 2016.....	8
f. Top 5 Diagnosis by Site Table.....	9
g. Health Professional Recruitment Activity Tables.....	11

Summary Highlights for the month of January

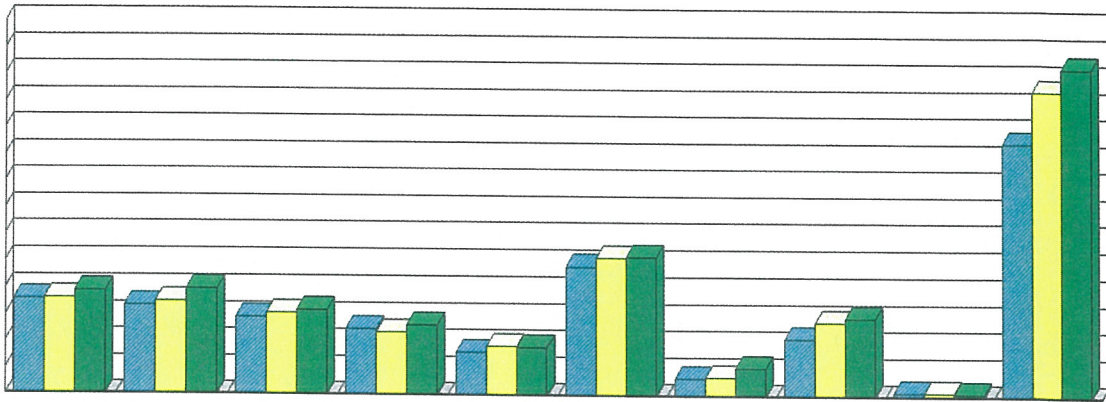
VA Indian/Tribal Health Reimbursement Program for FY 16– The purpose of this report is to capture the total amount disbursed, total unique Veterans, total billed charged, total VA amount paid, and the total number of claims using the Central Fee Files & Fee Basis Claims System (FBCS) for the Indian Health & Tribal Health Programs.

- **Total disbursements by program:** From the agreement Date to FYTD for Health Centers and Hospitals of Cherokee Nation were \$1,481,477.94 and served 535 vets with a total claim of 4221. Total disbursements for FY16 at the same centers and hospitals cost \$355,349.53 and served 275 vets.
- **CN-WW Hastings Hospital-** Received “Award of Excellence” as 2015 Oklahoma **Certified Healthy Business**. The Hospital also received an Award for Accomplishment from Oklahoma State Department of Health for obtaining **Baby Friendly Designation**. The hospital is taking steps to adding **speech Therapy** to its service line.
- The Emergency Department and **Urgent Care** provided care to **6,820 patients** during February 2016 with a Left Without Being Seen (LWOBS) rate of **7.3%**. Surgical Services performed **329 surgical procedures** during February; 81 EGD/Colonoscopies included in that number. **197** patients were transported during February 2016.
- **Dental Services:** **Clinical visits** include Exams, Emergency Exams, Return Visits for Treatment, Diabetic Screenings, and Headstart Screenings- **7,207**. **Scheduled Dental Examinations** for routine care; **1,617** Clients were served. **Community Dentistry:** Community Dentistry team is responsible for visiting schools and Headstart programs to do sealant and fluoride applications. This team travels to clinics without Dental Clinics to do screenings and facilitate patient access. They also coordinate education services and community meetings. **Services Provided by Community Dentistry Team:** 87 Screenings, **750** Fluoride applications, and 3 sealants placed during this month. **Emergency Exams-** These are unscheduled walk in patients **1,150**.
- **Public Health Nursing**– provided **488** home visits, **98** post-partum checkups. In addition **367** patients were transported.
- **JBC** served **27** clients; of those 17 were males and 10 were females.
- **Dietary Services**–**731** clients were provided dietary counseling services. The services include Classes for Diabetes, hypertension, Weight Mgmt., and healthy cooking. Nutrition Education Classes for Elementary School Students; Employee Health Challenge
- **CN Emergency Medical Service**– served **352** clients. **641** participants received training, of those **353** were Native Americans.
- **Staffing Report**– Total positions: 2,430; of these **2,157(88%)** are filled, 273(12%) are vacant. **Five provider** vacancies were filled.
- **Health facilities-** Health Facilities staff completed 151 of 154 Preventative Maintenance work orders open in February. Facilities staff opened 175 call-in work orders during the month, completing 156. Reviewed proposed layout for WPMHC Phase II remodel. The Health Service Vehicle fleet stands at 143 GSA vehicle and 17 tribal.

- **Healthy Living Program-** The program works directly with Cherokee communities, youths, and schools within the CN Jurisdiction to support healthy lifestyles and sponsors risk prevention. The program offered Smoking Cessation classes at various locations
- In Cherokee County PHE's conducted a parent training on 2/25/16 at the Early Childhood Unit. The training covered **MyPlate** and portion sizes for toddlers. We did a short demonstration with portion sizes and passed out handouts. In Mays and Rogers Counties, Setting up MACO Fit (Mayes County Fitness running/walking group) kicking off in March. Setting up ROCO Fit (Rogers County Fitness running/walking group) kicking off in March. Preparing for SAFENET color run on the first Saturday in March (Pryor).
- Staff delivered P.E. equipment to Salina Elementary School for taking part in our BMI data gathering campaign i.e.: parachute soccer goals etc.
- Patients were taught at AMO/Salina Diabetes Prevention Class on February 3rd the importance of staying physically active, we did some warm-ups, stretching, and basic Indian Dancing movements and everyone seemed to enjoy themselves.
- Developed an incentive program for Bountiful Baskets in Mayes County to provide free and reduced fresh fruit and vegetable to eligible families and elderly folks. **Bountiful Baskets** provided 60+ families w/ fresh produce baskets in February.
- **Community Recreation Center-**Total Members: **11,107**; Total Visits: **11,191**; Total Group Fitness: **2,526**
- **Contract Health Services**— During the month of February 2016, CHS program processed **8,613**; of those **8,419(97.7%)** were **approved** at the cost of \$ **3,830,657**.
- **Behavioral Health Services**— A range of behavioral health Services were provided across Cherokee Nation. **1916** clients were served during month of February. The services provided ranged from psychiatric services to rigorous psychological assessments to parent-child interaction therapy and included individual, group, marriage, and family therapy.
- **Breast and Cervical cancer early detection Program** – The program served **213 Indian/Cherokee women** (Clinical Breast Exam, Mammograms, Ultrasound, Pap smear, HPV testing, Colposcopy with or without biopsy, and Colposcopy w/ ECC and ECC) at the cost of **\$23,113.95**. **Education/outreach-** was offered at various locations including Sequoyah High School gym, Jay, Westville, Salina and Claremore.
- Go Red for Native Women's Heart Health" a Native American-specific Summit- Mvskoke Dome, Mvskoke Creek Nation, Okmulgee. Co-hosted by the American Heart Association.

Charts

AMBULATORY CARE PATIENT VISITS BY FACILITY, FBERUARY 2014-2016



	WPM	RBS	AMO	JAY	NOW	MUSK	CHC	VINITA	GADUGI	HASTINGS
FY 2014	8,926	8,390	7,310	6,252	4,082	12,081	1,679	5,448	429	23,781
FY2015	9,069	8,744	7,661	5,928	4,659	12,924	1,779	6,968	468	28,720
FY2016	9,779	9,992	8,029	6,634	4,559	12,950	2,662	7,446	358	30,824

This report is based on ambulatory care visits provided by one or more of the following disciplines,
Physician, Physician's assistant, Nurse practitioner, Dentist, Pharmacist, Optometrist, Behavioral health
clinicians and Nursing.

TOTAL AMBULATORY PATIENTS VISITS -FEBRUARY 2016

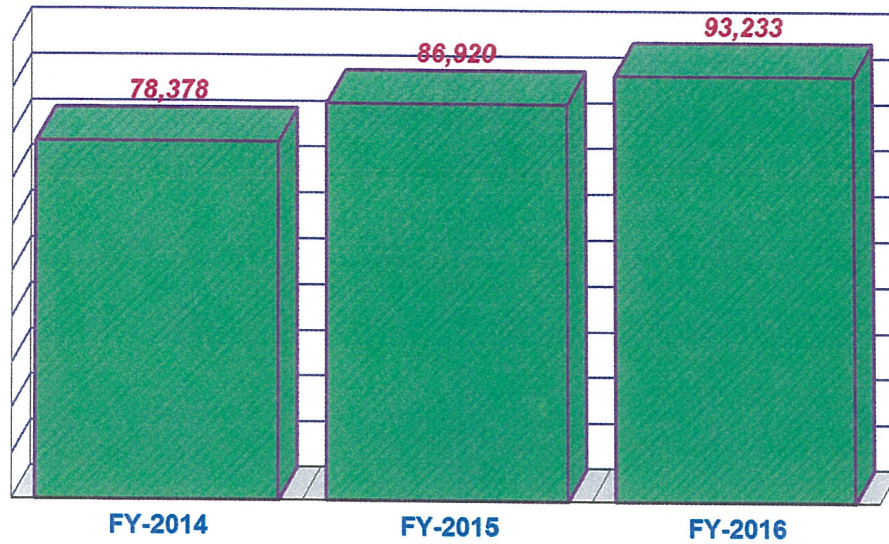
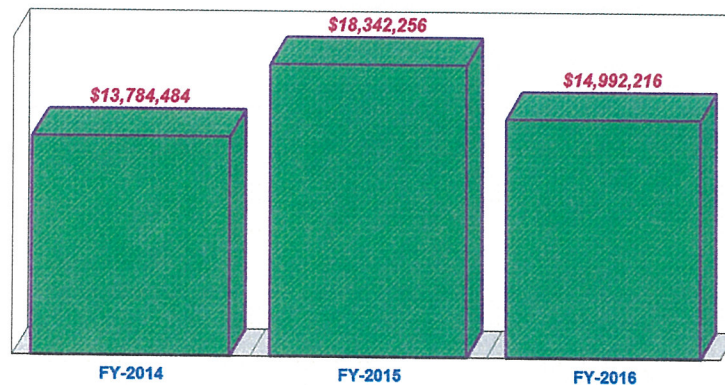
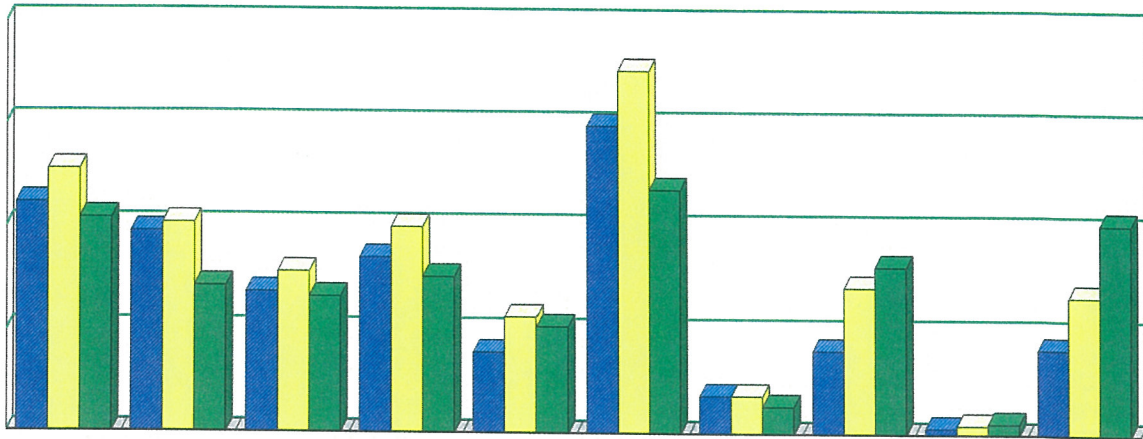


Chart Includes Ambulatory visits from clinics and CNWW Hastings Hospital

THIRD PARTY REVENUE CN-HASTINGS HOSPITAL ONLY(OCT-JAN 2016)

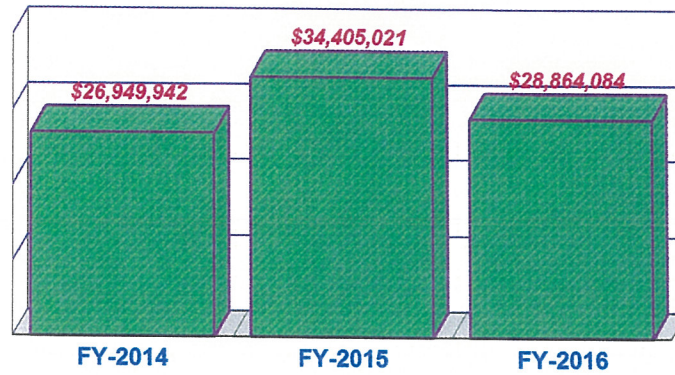


Third Party Revenue By Clinic, OCTOBER-JANUARY

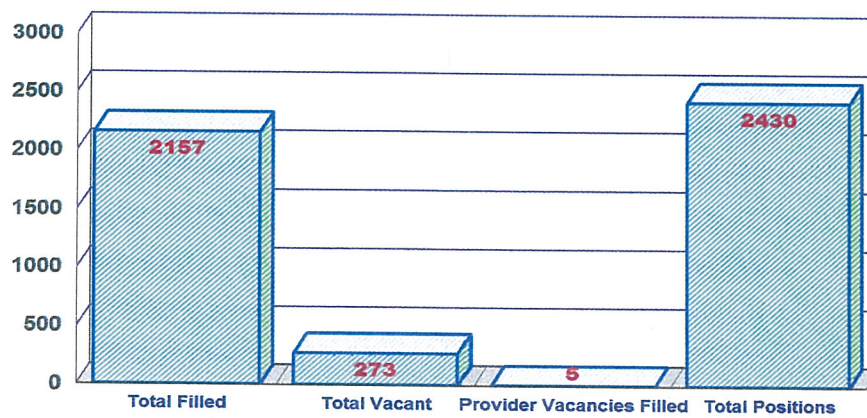


	Stilwell	Sallisaw	Jay	Salina	Nowata	Muskogee	Ochelata	Vinita	Ga Du Gi	Dental
FY-2014	\$2,235,061	\$1,955,902	\$1,380,242	\$1,708,410	\$790,843	\$2,990,693	\$371,984	\$821,409	\$69,700	\$841,214
FY-2015	\$2,553,066	\$2,036,035	\$1,570,059	\$1,998,186	\$1,132,279	\$3,527,313	\$371,510	\$1,430,997	\$93,523	\$1,349,797
FY-2016	\$2,082,439	\$1,437,971	\$1,330,574	\$1,530,833	\$1,039,853	\$2,371,962	\$276,826	\$1,639,706	\$115,054	\$2,046,650

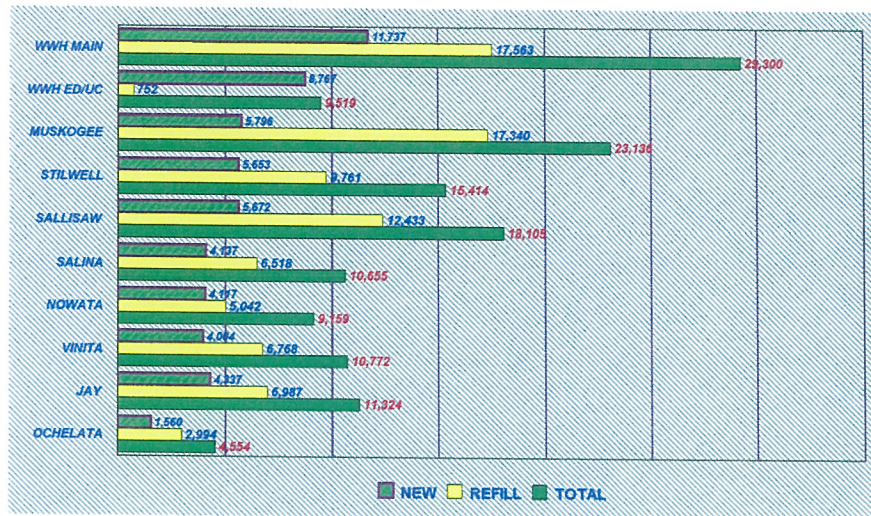
**THIRD PARTY REVENUE GRAND TOTAL(ALL SITES)
OCT-JAN 2016**



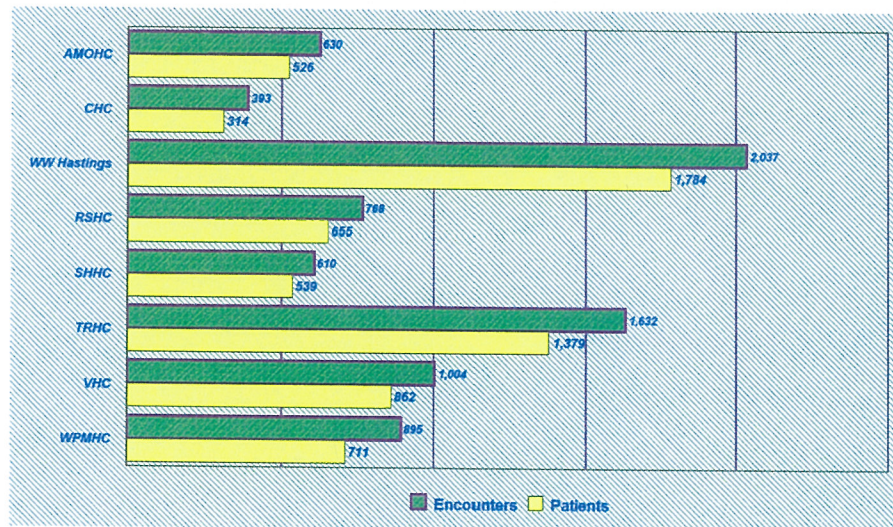
Staffing Summary-FEBRUARY 2016



RX BY SITE (FEBRUARY 2016)



DENTAL SERVICES FEBRUARY 2016



Top Diagnoses by Clinical Site

Sam Hider HC	#	A- MO HC	#
Essential (primary) hypertension	432	Essential (primary) Hypertension	386
Type 2 diabetes mellitus without complications	207	Type 2 Diabetes	322
Hyperlipidemia	105	Encounter for screening, unspecified	297
Other Non-specified diabetes mellitus without complications	102		
Hypothyroidism, unspecified	85	Vitamin D deficiency, unspecified	190
		Encounter for immunization	183
Ochelata HC	#	Redbird HC	#
Essential (primary) hypertension	230	Essential (primary) hypertension	452
Hyperlipidemia, unspecified	101	Type 2 diabetes mellitus without complications	214
Type 2 diabetes mellitus without complications	97	Other specified diabetes mellitus w/o complications	129
Encounter for screening, unspecified	57		
Gastro-esophageal reflux disease without esophagitis	51	Gastro-esophageal reflux disease w/o esophagitis	124
		Hyperlipidemia, unspecified	101
Ga Du Gi HC	#	Wilma P Mankiller HC	#
		Essential (primary) hypertension	416
Acute maxillary sinusitis, unspecified	112	Encounter for general adult medical examination	327
Allergic rhinitis, unspecified	32	Other Non-specified diabetes mellitus without complications	236
Acute bronchitis, unspecified	18	Type 2 diabetes mellitus without complications	208
Encounter for administrative examinations	22	Encounter for administrative exam, unspecified	174
Urinary Tract Infection, site not specified	13		
Three Rivers HC	#	Vinita HC	#
Essential (primary) hypertension	264	Encounter for screening for diseases of the blood and blood-forming organs and certain disorders involving the immune mechanism	222
Encounter for routine child health examination without abnormal findings	212	Essential (primary) hypertension	219
Type 2 diabetes mellitus without complications	172	Encounter for screening, unspecified	192
Other specified diabetes mellitus without complications	108	Encounter for screening for other suspected endocrine disorder	153
		Hyperlipidemia, unspecified	153
Allergic rhinitis	92		

Will Rogers HC	#	WW Hastings HC	#
Essential (primary) hypertension	356	Essential (primary) hypertension	959
		Pregnant state, incidental	578
Hyperlipidemia, unspecified	185	Encounter for immunization	503
Type 2 Diabetes mellitus without complications	150	Hyperlipidemia, unspecified	335
Other specified diabetes mellitus without complications	124	Gastro-esophageal reflux disease w/o esophagitis	336
Major depressive disorder, single episode, unspecified	91		

Health Professional Recruitment Activity- as of March 21, 2016

Health Facilities

Location	Specialty	Vacated by	Status	Start Date	Ethnicity
SHHC, Jay	R/FT Physician	Westenhaver	Recruiting (Pediatrician/Meds-Peds)		
SHHC, Jay	R/FT APRN	Terri Brashear	Reinstate former Nurse Prac. in 2016	Pending	Cherokee
SHHC, Jay	R/FT Physical Therapist	NEW	2 IHS Candidates Interviewing		
A-Mo, Salina	R/FT Physician	NEW	Candidate Interviewed		
A-Mo, Salina	R/FT Physician	Clinton Childs	Recruiting		
Vinita	R/FT Physician	Pearish(to Med Dir.)	Jackson - Pending Documents Com. Corp	Pending	Af. Amer.
Vinita	R/FT Physician	Hardy	Recruiting		
Vinita	R/FT Physician	New	Recruiting		
Vinita	R/FT Mid-level	Kim Mulanax (toBH)	LOI-pending documents	5.1.16	Cherokee
Vinita	R/FT Physical Therapist	Lindsey Schultheiss	LOI-Pending passed boards	6.27.16	Creek
Vinita	R/FT Dentist	Lee Shackelford	Cherokee, IHS Candidate interviewing		
Cooweescoowee , Ochelata	R/FT APRN (BH)	New	Recruiting		
WPM, Stilwell	R/FT Physician	Carmelo Echeverria	Recruiting		
WPM, Stilwell	R/FT Physician	NEW FY16	Recruiting		
WPM, Stilwell	R/FT APRN	NEW FY16	Commission Officer transfer from WWH	Pending	Cherokee
WPM, Stilwell	R/FT APRN	Powell	LOC-pending documents	Pending	Caucasian
WPM, Stilwell	R/FT APRN	NEW FY16	LOC-pending documents	Pending	Caucasian
WPM, Stilwell	Pharmacist	Jack Pittman(to Refill Ctr)	Pending Commissioning	Pending	Caucasian
WPM, Stilwell	Pharmacist	NEW FY16	Morgan	3.28.16	Cherokee
Redbird, Sallisaw	R/FT Physician	Brian Rodgers	Recruiting		
Redbird, Sallisaw	R/FT Physician		Recruiting		
Redbird, Sallisaw	R/FT Physician		Recruiting		
Redbird, Sallisaw	R/FT APRN	NEW FY16	Files	4.25.16	Caucasian
Redbird, Sallisaw	R/FT APRN	Suzanne Rodgers	LOC-pending documents	Pending	
TRHC, Muskogee	R/FT Physician	Stephen Hammock, PA	LOC-pending documents	Pending	Caucasian
TRHC, Muskogee	R/FT Physician	Lisa Ortiz	LOI-pending documents	Pending	Cherokee
TRHC, Muskogee	R/FT APRN	NEW FY16	Pending Signed Contract	pending	Cherokee
TRHC, Muskogee	Dentist	NEW	Pending conversion to Hygienist		
TRHC, Muskogee	Dentist	McKinney	Recruiting		

W.W. Hastings Hospital & Behavioral Health

Department	Status/Specialty	Vacated by	Recruitment Activity	Start Date	Ethnicity
OB/GYN	R/FT CNM	Rebecca Stephenson	Selection made. Pending documents.	Pending/ June	
Urgent Care	R/FT Physician	New	Requesting change to 2 Midlevels		
Urgent Care	R/FT Midlevel	Sarah McAuliff	Ward	3.28.16	
Urgent Care	PRN Physician	Matt Wiley	Holding for Andrew Ryals		
Urgent Care	PRN Physician	Lana Myers	Pending April MEC approval	pending	
Urgent Care	PRN Midlevel	Ashley Couch	Recruiting		
ER	R/FT Physician	New	Recruiting		
ER	R/FT Physician	Franklin	Pending documents	pending	
Primary Care	R/FT Physician	Charles Pradieu	Recruiting		
Pharmacy	R/FT Pharmacist	New	hold for current intern; CO	Summer 2016	
Pharmacy	R/FT Pharmacist	Stacy Tacket	Interviews completed, waiting selection		
Pharmacy	R/FT Pharmacist	Carey Lewis	Interviewing		
Dental	R./FT Dentist	New	MEC approved, waiting release form employer	7.18.16	
Dental	R/FT Endodontist	Brandon Rogers	Working w/Emily Berg-training school.		
Behavioral Health	R/FT APRN	Angela Phillips	Pending documents	Pending	
Behavioral Health	R/FT Psychologist	BJ Boyd	Conducting Interviews		
Behavioral Health	R/FT APRN	Damaris Deutsch	Selection made. Pending start date.	Pending	Caucasian

Highlights: Since start of fiscal year, 28 Health Professionals have started work at CNHS. Currently we have 24 open searches we're recruiting for, of which 8 are new budgeted positions. We have a new provider in process to start for Vinita and PA for Stilwell. We're also recruiting a Cherokee finishing residency for Sallisaw. We will be attending OSU Residency fair 3/25 in Tulsa and Career MD job fair in Tulsa on April 5th.

Health Facilities	
13 new health professionals started as of FY16.	
Total Vacancies	29
Vacancies Filled	14
Current Vacancies	15
<i>Replacement</i>	9
<i>FY16 Vacancies</i>	6

WWH & BH	
15 new health professionals started as of FY16.	
Total Vacancies	17
Vacancies Filled	8
Current Vacancies	9
<i>Replacement</i>	7
<i>FY16 Vacancies</i>	2